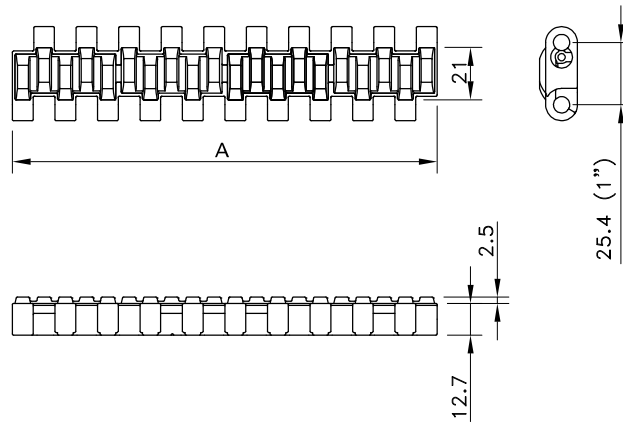
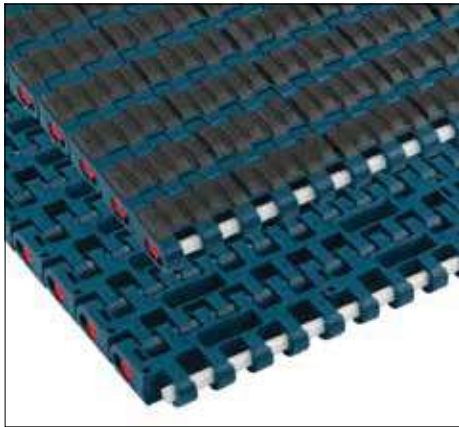
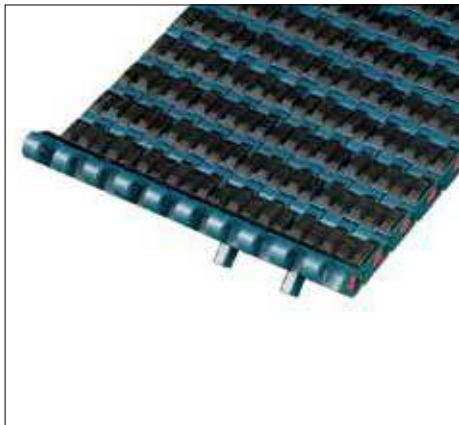


# Supergrip 1005

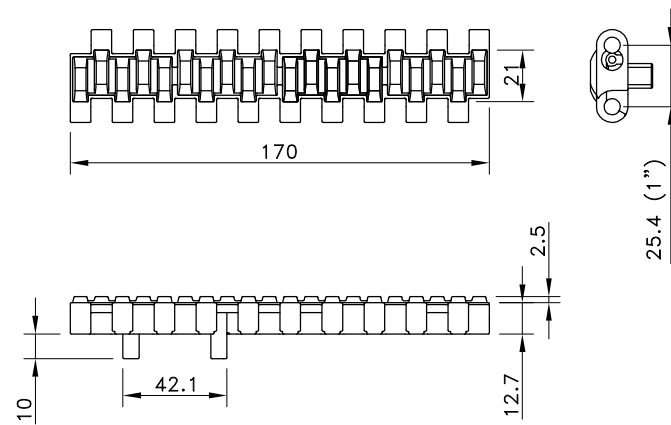


Assembly	Belt Type	Code Number*	Temperature range °C		Working Load (max.) N/m (21°C)	Weight kg/m <sup>2</sup>	Backflex Radius (min.) mm
			Dry	Wet			
<b>XLG-Acetal with PBT Pins</b>							
Standard	SG 1005 XLG	877.50.xx	-40 to +65	up to +65	35000	14.00	25
Double Positrack	SGDP 1005 XLG	877.51.xx					
<b>XP-Polypropylene with PBT Pins</b>							
Standard	SG 1005 XP	877.64.xx	4 to 65	4 to 65	17500	10.00	25
Double Positrack	SGDP 1005 XP	877.66.xx					
<b>TCF-Tough Composite Friction Material with Stainless Steel Pins</b>							
Standard	SG 1005 TCF	877.71.xx	-18 to +82	-18 to +60	32000	19.30	25
Double Positrack	SGDP 1005 TCF	877.72.xx					

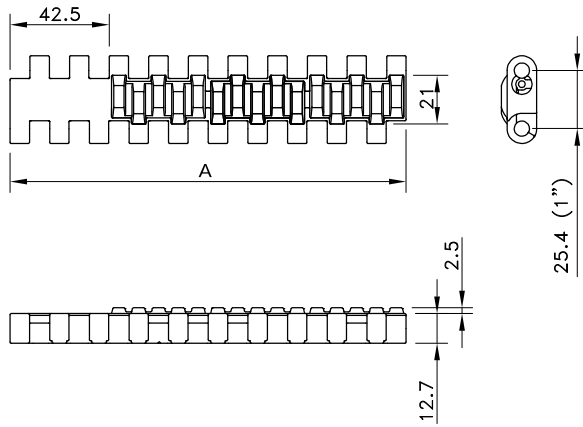
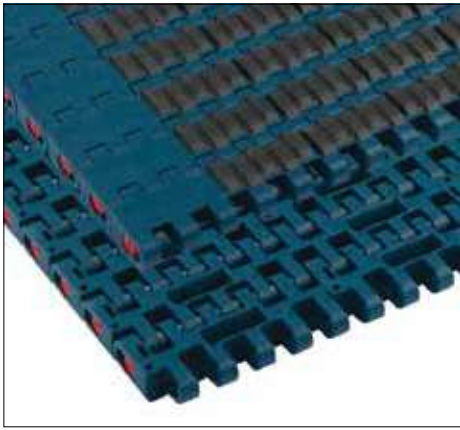
\* In code numbers xx corresponds with the belt width (A), starting with 11 for 170 mm, 12 for 255 mm and so on with 85 mm increments up to 6120 mm; see also page 208. Standard 100% rubber; other percentages and sizes on request. Rubber top is a black elastomere, with a hardness of 40 (XP) or 50 (XLG) or 55 (TCF) shore A.



1005 supergrip belt with double positrack on one side of the belt



# Supergrip Side-Indent 1005



Assembly	Belt Type	Code Number*	Temperature range °C		Working Load (max.) N/m (21°C)	Weight kg/m <sup>2</sup>	Backflex Radius (min.) mm
			Dry	Wet			

### XLG-Acetal with PBT Pins

Standard	SGS 1005 XLG	877.52.xx	-40 to +65	up to 65	35000	14.00	25
Double Positrack	SGSDP 1005 XLG	877.53.xx					

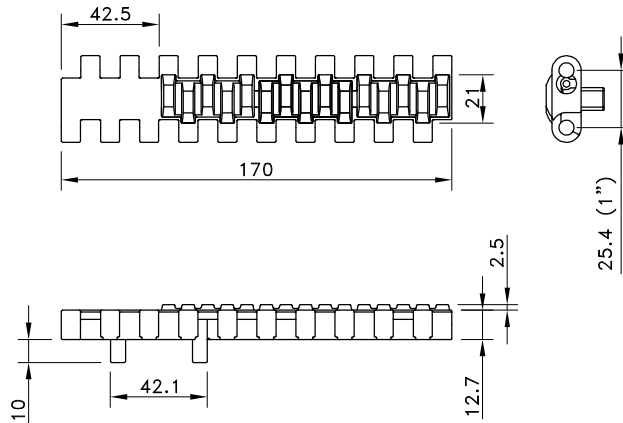
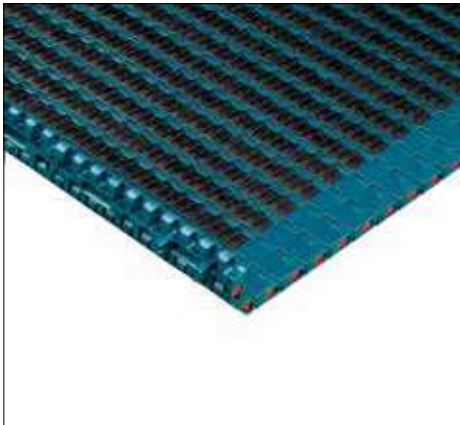
### XP-Polypropylene with PBT Pins

Standard	SGS 1005 XP	877.65.xx	4 to 65	4 to 65	17500	10.00	25
Double Positrack	SGSDP 1005 XP	877.67.xx					

\* In code numbers xx corresponds with the belt width (A), starting with 12 for 255 mm, 13 for 340 mm and so on with 85 mm increments up to 6120 mm; see also page 208. Standard 100% rubber; other percentages and sizes on request.

Rubber top is a black elastomere, with a hardness of 40 (XP) or 50 (XLG) shore A.

A center indent of 85 mm is possible from 765 mm belt width, with steps of 170 mm.



1005 Supergrip Side-Indent belt with Double Positrack